

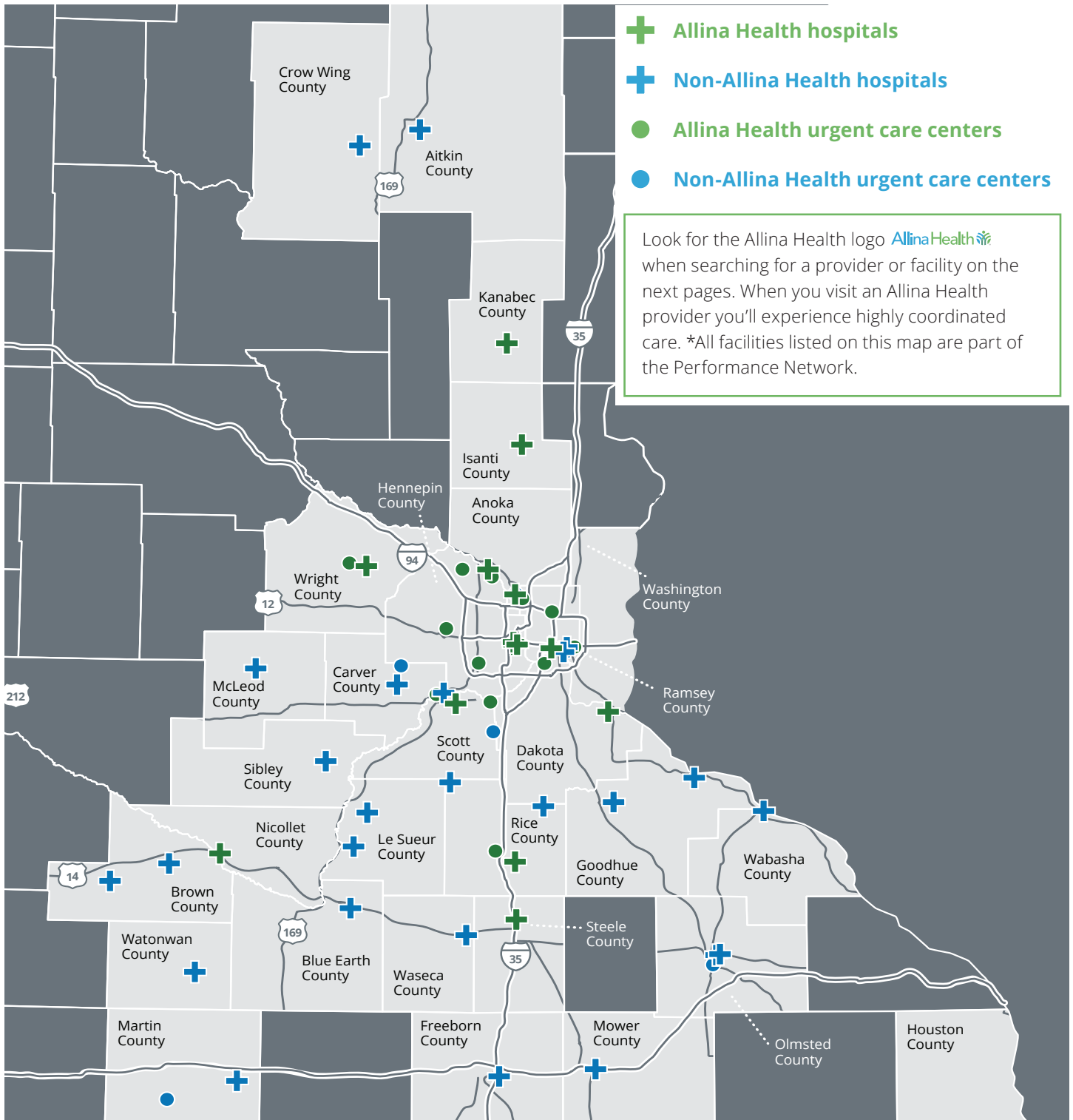


Allina Health | Aetna
Performance Network
Hospitals and Urgent Care Centers
May 1, 2019

Allina Health | Aetna Performance Network

Hospitals and urgent care clinics in Minnesota include:

 39 Hospitals	 18 urgent care centers	 3,900+ primary care providers	 15,000+ specialists
--	---	--	--



For illustrative purposes only.

Allina Health | Aetna is the brand name used for products and services provided by Allina Health and Aetna Insurance Company. Health benefits and health insurance plans are offered and/or underwritten by Allina Health and Aetna Insurance Company, which has sole financial responsibility for its own products. Allina Health and Aetna Insurance Company is an affiliate of Allina Health and, of Aetna Life Insurance Company and its affiliates (Aetna). Aetna provides certain management services to Allina Health | Aetna.

Allina Health | Aetna Performance Network – hospitals

	Hospital	Address	City	ZIP
+	Riverwood Healthcare Center	200 Bunker Hill Dr.	Aitkin	56431
+	Mayo Clinic Health System Albert Lea	404 W Fountain St.	Albert Lea	56007
+	Ridgeview Sibley Medical Center	601 W Chandler St.	Arlington	55307
+	Mayo Clinic Health System Austin	1000 1st Dr. NW	Austin	55912
+	Buffalo Hospital 	303 Catlin St.	Buffalo	55313
+	Cambridge Medical Center 	701 S Dellwood St.	Cambridge	55008
+	Mayo Clinic Health System Cannon Falls	32021 County 24 Blvd.	Cannon Falls	55009
+	Mercy Hospital 	4050 Coon Rapids Blvd. NW	Coon Rapids	55433
+	Cuyuna Regional Medical Center	320 E Main St.	Crosby	56441
+	Mayo Clinic Health System Fairmont	800 Medical Center Dr.	Fairmont	56031
+	District One Hospital 	200 State Ave.	Faribault	55021
+	Mercy Hospital – Unity Campus 	550 Osborne Rd.	Fridley	55432
+	Glencoe Regional Health Services	1805 Hennepin Ave. N	Glencoe	55336
+	Regina Hospital 	1175 Nininger Rd.	Hastings	55033
+	Hutchinson Health	1095 Hwy. 15 S	Hutchinson	55350
+	Mayo Clinic Health System Lake City	500 W Grant St.	Lake City	55041
+	Ridgeview Le Sueur Medical Center	621 S 4th St.	Le Sueur	56058
+	Mayo Clinic Health System Mankato	1025 Marsh St.	Mankato	56001
+	Children's Hospital and Clinic	2525 Chicago Ave. S	Minneapolis	55404
+	Abbott Northwestern Hospital 	800 E 28th St.	Minneapolis	55407
+	Phillips Eye Institute 	2215 Park Ave.	Minneapolis	55404
+	First Light Health System-Mora Hospital and Clinic	301 Hwy. 65 S	Mora	55051
+	Mayo Clinic Health System New Prague	301 2nd Str. NE	New Prague	56071
+	New Ulm Medical Center 	1324 5th St. N	New Ulm	56073

Allina Health | Aetna Performance Network – hospitals

	Hospital	Address	City	ZIP
+	Northfield Hospital	2000 N Ave.	Northfield	55057
+	Owatonna Hospital AllinaHealth	2250 26th St. NW	Owatonna	55060
+	Mayo Clinic Health System Red Wing	701 Hewitt Blvd.	Red Wing	55066
+	Mayo Clinic Hospital Rochester	1216 2nd St. SW	Rochester	55902
+	Mayo Clinic Hospital Rochester	201 W Center St.	Rochester	55902
+	St. Francis Regional Medical Center AllinaHealth	1455 St. Francis Ave.	Shakopee	55379
+	Sleepy Eye Medical Center	400 4th Ave. NW	Sleepy Eye	56085
+	Mayo Clinic Health System Springfield	625 N Jackson Ave.	Springfield	56087
+	Mayo Clinic Health System St. James	1101 Moulton & Parsons Dr.	St. James	56081
+	Gillette Children's Specialty Healthcare	200 E University Ave.	St. Paul	55101
+	United Hospital AllinaHealth	333 N Smith Ave.	St. Paul	55102
+	Children's Hospital and Clinic	345 N Smith Ave.	St. Paul	55102
+	River's Edge Hospital & Clinic	1900 N Sunrise Dr.	St. Peter	56082
+	Ridgeview Medical Center	500 S Maple St.	Waconia	55387
+	Mayo Clinic Health System Waseca	501 State St. N	Waseca	56093

Allina Health | Aetna Performance Network – urgent care centers

	Hospital	Address	City	ZIP
●	Allina Health Urgent Care Allina Health	755 Crossroads Campus Dr.	Buffalo	55313
●	Allina Health Urgent Care Allina Health	14000 Nicollet Ave. S	Burnsville	55337
●	Allina Health Urgent Care Allina Health	11269 Jefferson Hwy.	Champlin	55316
●	Ridgeview Two Twelve Medical Center – Urgent Care	111 Hundertmark Rd.	Chaska	55318
●	Allina Health Urgent Care Allina Health	9055 Springbrook Dr. NW	Coon Rapids	55433
●	Allina Health Urgent Care Allina Health	7373 France Ave. S	Edina	55435
●	Mayo Clinic Health System – Fairmont Urgent Care	800 Medical Center Dr.	Fairmont	56031
●	Allina Health Urgent Care Allina Health	100 State Ave.	Faribault	55021
●	Allina Health Urgent Care Allina Health	5565 Blaine Ave.	Inver Grove Heights	55076
●	Northfield Hospital & Clinics – Urgent Care Lakeville	9974 214th St. W	Lakeville	55044
●	WestHealth Urgent Care Allina Health	2855 Campus Dr.	Plymouth	55441
●	Mayo Express Care – North	4221 W Circle Dr. NW	Rochester	55901
●	Mayo Express Care – South	500 Crossroads Dr. SW	Rochester	55902
●	St. Francis Urgent Care Allina Health	1455 St. Francis Ave.	Shakopee	55379
●	Allina Health Urgent Care Allina Health	4194 N Lexington Ave.	Shoreview	55126
●	Allina Health Urgent Care Allina Health	1021 Bandana Blvd. E	St. Paul	55108
●	Allina Health Urgent Care Allina Health	8675 Valley Creek Road	Woodbury	55125

Visit allinahealthaetna.com and click Find a Doctor to find the most up-to-date information on providers and facilities.

This material is for information only. Health benefits and health insurance plans contain exclusions and limitations. Providers are independent contractors and are not agents of Allina Health | Aetna. This depiction is not intended to be a full representation of network providers. Provider participation may change without notice. For more information about Aetna or Allina Health Aetna plans, refer to **allinahealthaetna.com**. Allina Health | Aetna does not provide care or guarantee access to health care services. Information is believed to be accurate as of the production date; however, it is subject to change.

allinahealthaetna.com